



+1 386.681.5535

info@hsrrace.com

hsrrace.com

One Daytona Boulevard Daytona Beach, FL 32114



**HSR IMSA CLASSIC at Rolex 24**  
**Daytona International Speedway**  
January 21 – 25, 2026

**Official Schedule 01/16/2026**

**Load In:**

All race haulers **MUST** be on property Wednesday, January 21, no later than 4:00pm for load-in.  
This is the only time the haulers may enter the facility.

**WEDNESDAY, January 21**

7:00am –	Begin staging in Lot 6 ( <i>see Map in “Staging and Load-In” section</i> )
7:00am – 5:00pm	IMSA Registration Open ( <i>see Map in “Registration” section</i> )
4:45pm –	Prepare transporters for Load-In
5:00pm –	Load-In under direction of DIS Security – <b>NO EXCEPTIONS</b>
10:00pm –	Garage Area Closes

**THURSDAY, January 22**

7:00am –	Garage Area Opens
7:00am – 7:00pm	IMSA Registration Open ( <i>see Map in “Registration” section</i> )
1:30pm – 2:30pm	HSR Drivers' Meeting – Location TBD
3:45pm – 4:15pm	HSR IMSA Classic Practice
11:00pm –	Garage Area Closes

**FRIDAY, January 23**

6:45am –	Garage Area Opens
7:00am – 5:00pm	IMSA Registration Open ( <i>see Map in “Registration” section</i> )
8:40am – 8:55am	HSR IMSA Classic Qualifying Session
6:30pm – 7:00pm	HSR IMSA Classic Qualifying Race
8:45pm –	Garage Area Closes

**SATURDAY, January 24**

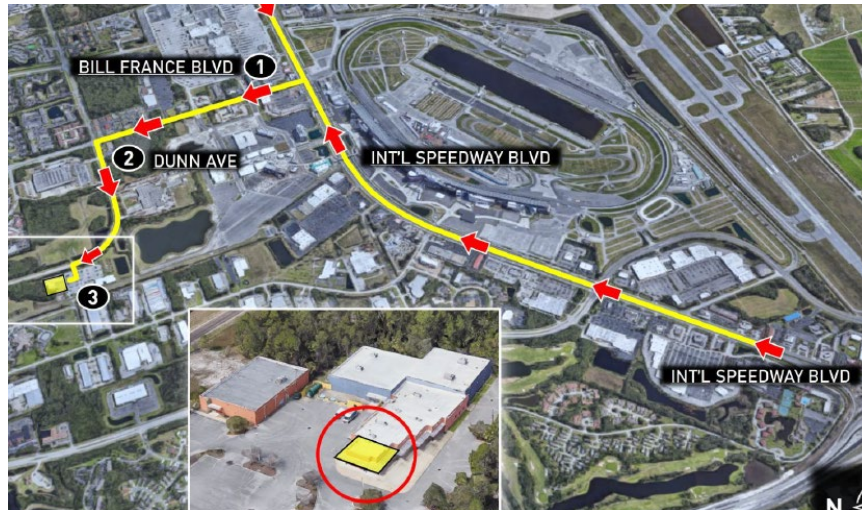
6:30am –	Garage Area Opens
7:00am – 5:00pm	IMSA Registration Open ( <i>see Map in “Registration” section</i> )
8:50am – 9:20am	HSR IMSA Classic Feature Race
9:30am –	HSR IMSA Classic Podium Ceremony (Top 3 in Prototype & Top 3 in GT)
10:00am –	Cars remain on display in Paddock and Fane Zone

**SUNDAY, January 25**

4:00pm –	Load-Out under direction of DIS Security
----------	--

## **Registration**

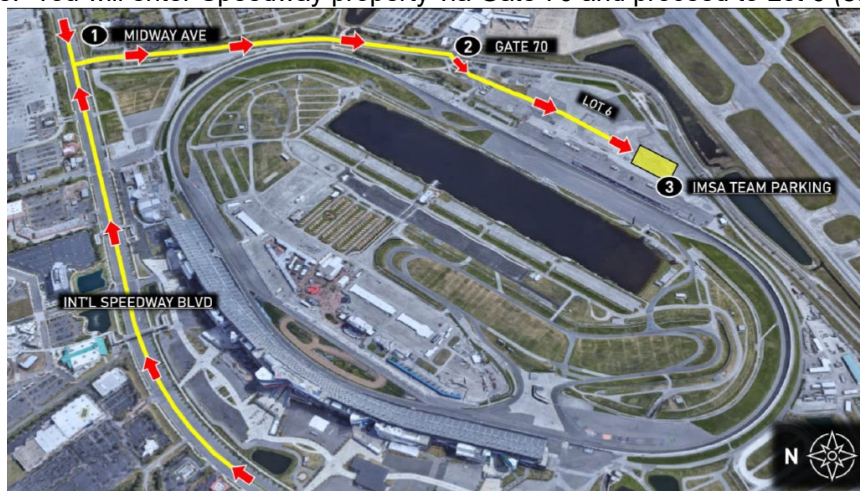
- Each entry receives a credential for the driver and two (2) crew. Overcrew credentials are available for purchase.
- You will pick up your (and crew member) credentials from IMSA Registration (see map).
- Email the full name, email address and cell phone number of each crew member to [Lhwatts@hsrrace.com](mailto:Lhwatts@hsrrace.com).
- All Drivers and Crew Members will receive and complete the IMSA digital waiver.
- To get to IMSA Registration at 2013 Dunn Avenue, Daytona Beach, FL 32114. Take International Speedway Boulevard to Bill France Boulevard. At light turn onto Bill France Boulevard. At light, turn left onto Dunn Avenue. Turn left to enter Daytona Credentials location and follow signate for IMSA Registration (door #1, yellow shaded area).



- Each competition entry receives credentials for Driver and Crew members to IMSA's Apex Café.
- HSR will be set-up in the Staging area to provide one (1) infield parking pass and Hospitality credentials as appropriate and to handle Overcrew payments.

## **Staging and Load-In**

- HSR Rigs for competition and display cars may begin staging on Wednesday, January 21 at 7:00am in Lot 6.
- Staging will be in Lot 6 – to get to Lot 6, take International Speedway Boulevard to Midway Avenue. At light, turn onto Midway Avenue. You will enter Speedway property via Gate 70 and proceed to Lot 6 (see map below).



- All haulers will Load-In beginning at 5pm on Wednesday.
- Wednesday, January 21 is the only time for Load-In. Your rig must be in Lot 6 by 4pm.

**Event Format:** In recognition of the historical significance of the cars participating in this event, the races will be operated in a "Controlled Race Format." All race starts will be undertaken by forming up in pairs, split by Prototype and GT cars, on the formation lap. At the green flag, cars will fall into single file and remain in single file until they reach the exit of Turn 6

which leads onto the high banks. Overtaking may commence at this point for the rest of the race. Slower cars should stay low on the banking and faster, overtaking cars should remain high on the banking.

#### **Other:**

- The HSR IMSA Classic garage area will be open to spectators from the time the track opens until the end of on-track activities each day.
- Spectators are welcome to see the cars up close.
- HSR Haulers may exit the facility after 4:00pm on Sunday, January 25, under direction of DIS Security

#### **Sunoco Racing Fuel**

Sunoco fuel will be delivered in barrels and **MUST be ordered before Monday, January 19 at 12:00pm (Eastern)**. Orders can be placed by contacting Rick Williams at Southern Racing Fuels at [rwilliams@portconsolidated.com](mailto:rwilliams@portconsolidated.com) or (561) 262-0052.

#### **Golf Carts**

Golf carts may be rented via Motorsports Entertainment Experience by contacting them at [golfcarts@nascar.com](mailto:golfcarts@nascar.com) or (386) 681-3850.

If you plan to bring your own Golf Cart, a Single Event Golf Cart Permit, Indemnification Agreement and Certificate of Insurance (meeting all DIS requirements) and a check in the amount of \$250 per golf cart must be provided. Please forward all but the check to Ellen Cammann at [golfcarts@nascar.com](mailto:golfcarts@nascar.com). Link to Single Event Golf Cart Permit: [Golf Cart Permit Forms](#).

#### **Apex Cafe**

Competition drivers and their crew receive a credential to IMSA's Apex Café. Each competition driver and their crew (both the two (2) complimentary crew as well as purchased Overcrew) will receive a credential to IMSA's Apex Café. This credential will provide access on Friday, January 23 and Saturday, January 24. You will pick up these credentials in Lot 6 before you Load-In.

Hours for the Apex Café on both Friday and Saturday are as follows:

6:30am – 9:30am	Breakfast
11:00am – 2:00pm	Lunch
4:30pm – 7:30pm	Dinner

Late Night on Saturday only

11:00pm – 1:00am	Late Night
------------------	------------

Participants with Display Cars may purchase Apex Café credentials for \$200/each.

#### **Infield Care Center**

The Infield Care Center is located beside the D/O RV Lot outside the Yellow garages. Their hours are:

8:00am – 7:00pm	Wednesday, January 21
7:00am – 10:00pm	Thursday, January 22
7:00am – 8:00pm	Friday, January 23
7:00am – 7:00am	Saturday
	Monday

The Infield Care Center will open at 7:00am on Saturday and remain open until 7:00am on Monday.

#### **Links**

IMSA Rolex 24 at Daytona Official Schedule: [IMSA Rolex 24 at Daytona Official Schedule](#)

HSR IMSA Classic Logistics Document: [HSR IMSA Classic Logistics](#)

